

❖ The Cruze Chronicle ❖

Double Digit Distribution

April 2011

Litchfield

18th annual tournament is set for July

This year, the 2011 Cruze Family Invitational Golf Tournament will be played at the Litchfield Golf Course.

The rules for the tournament are simple - in order to win, you have to be eligible, you have to sign up, you have to show up, and you have to have the lowest score.

Only a select few are eligible to play in this tournament. If you are one of the few who are direct descendants of Carl and Leona Cruze, (or are one of their spouses or children) you are invited to play in this year's Cruze Family Invitational Golf Tournament.

Signing up for the tournament is as easy as dialing a telephone and giving your name to the tournament director. Not calling the director is the only way you can miss the fun.

The tournament begins on Saturday and ends on Sunday. The best score from Sunday's game wins the tournament. However, if Sunday's game cannot be completed, then the best score from Saturday's game wins the tournament.

Although Saturday's game is not required, it's your chance to become familiar with the course, that is, find the traps, trees, water, blind shots, and observe the pin placements.

There are no "gimmies" in this tournament and you can stop swinging only after your ball is in the cup.

The winner will be presented with a traveling trophy which will have their



5th hole—Par 4

name engraved on it for all time and will receive a stylish cap with the tournament name and year on it.

A special feature of the tournament is that the player with the highest score gets to have their picture taken while presenting the trophy to the winner of the tournament. We suggest that you don't waste any strokes.

Registration Instructions:

If you want to play in this year's tournament, call this year's director to get your name on the list. Telling someone else in the hopes they will remember to tell the director has not worked well in the past.

Call **Mike** at **320-434-2502** before July 5th to reserve your place. **Because of the "Pot Luck" dinner, there won't be a tournament entry fee. See the back for more details on how to help with the potluck.** You'll have to pay for your "green fees", tees, and golf balls. Miss the deadline and you'll miss the tournament.



Staff writer

The eighteenth annual Cruze Family Invitational Golf tournament is scheduled to be held the week-end of July 30th and 31st.

The family golf tournament is going to be played at a new course this year—the Litchfield Golf Course in Litchfield. It's located on the South West side of town. It will be one of the easier courses we've played because it's fairly flat and there is relatively little water.

The first hole is fairly representative of the course. It's flat, lined with trees, and the green is generously sloped. It's a hole where the long hitters are going to be inextricably drawn to "let it all hang out". However, because of the way the trees line the fairway, if you do and your ball lands outside the fairway, it will be impossible to "go for the green" and you will have to waste a shot just to get it back into play.

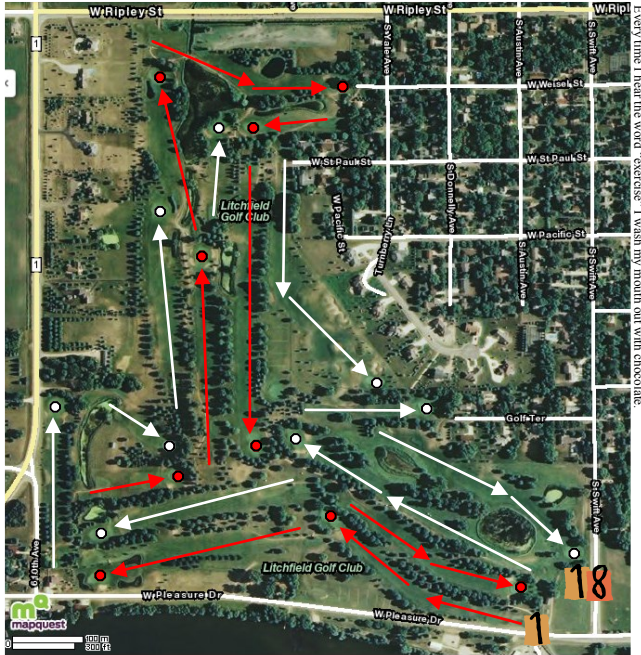
The most difficult hole is the 6th. While it's only a par four, its challenge lies in the tee shot and the final putt(s).

The best landing area is just to the right of the marsh on the left side of the fairway. To land there (about 200 yards) you need to flirt with the marsh. If you land short of the marsh, you will be in rough grass. If you land short and right, you're going to get wet. If you land long and right, you will be in the trees or behind a mound that hides the view of the green.

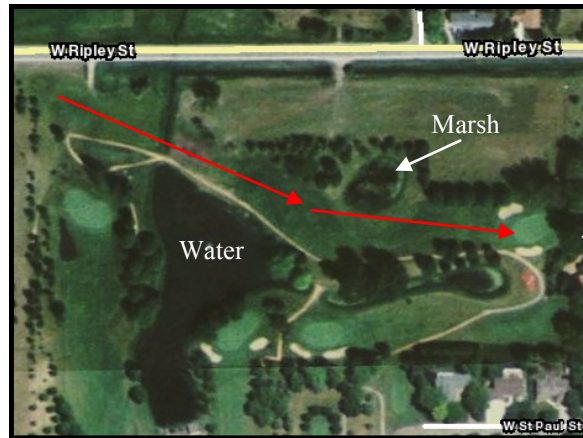
Also, this green is exceptionally sloped. Try to keep it to two putts.

Staff writer





6th hole at the Litchfield Golf Course



The 6th hole looks fairly easy, however the normal landing area is rough grass with trees on the left and water on the right. If you go too far left, you'll be in the marsh and if you go long and right (240—260 yds), you will be in the trees or behind a small hill. Play this one carefully. The best landing spot is just to the right of the marsh (220 yds).

Saturday Pot luck Dinner

It's too expensive for the host to purchase all of the food for the Saturday pot luck dinner. So, in lieu of an entry fee for the tournament, we are again asking that you volunteer to bring some food and/or supplies to share.

Mike and Jan will be sending an email to everyone with a list of the needed food and/or supplies. When you get the list, consider signing up to help them. They will follow up with a call. Let them know no later than the first of July how you will be helping, so that he can prepare accordingly.

Tournament dates: July 30th and 31st
Tee times: Saturday's tee time is 7:00
 Sunday's tee time is 7:00
Groups reserved: up to 24 players
Green fees: \$40.00 includes 1/2 cart (per round)
 The Litchfield Golf Course has a driving range and a small practice putting green.



I didn't say it was your fault, I said I was blaming you.

Our annual family Texas Hold-Em Poker tournament will be held at Mike and Jan's home on Friday evening July 29th. The tournament will start promptly at 6:00 pm and will end promptly at 10:00 pm. Mike and Jan will be sending everyone directions, times, and requests for chairs (if necessary).

Mike and Jan are doing double duty this year, so any help you can give them will be appreciated.



If I argued with you, then we'd both be wrong.

I used to be indecisive, now I'm not sure.